

gentoohomes

Sweetbriar Park

Modern 3 and 4 bedroom homes







gentoo homes

We provide a range of high quality two to five bedroom homes throughout the region. We provide around 200 homes per year and all of our house styles are thoughtfully designed and based in carefully selected locations.

As a profit for purpose organisation all of our profits from our new homes are reinvested into Gentoo's Affordable Housing Programme. You can learn more about the work of Gentoo Housing Association at gentoogroup.com.

We take pride in every aspect of our work and endeavour to offer all of our customers a home that exceeds their expectations and provides them with the lifestyle they desire.

All of our homes also come with a two year Gentoo Homes Customer Care guarantee and a 10 year NHBC warranty as standard - providing total peace of mind about your new Gentoo home.





Sweetbriar Park

Sweetbriar Park provides a superb collection of 108 high quality homes to West Park Garden Village located on the north west fringe of Darlington.

Our eagerly awaited development features a range of our renowned and best selling 3, 4 and 5 bedroom house types as well as incorporating a number of new designs and modifications to our range in order to compliment the West Park streetscape.

All house styles at Sweetbriar Park provide modern and spacious living spaces perfect for first-time buyers or those looking to upgrade to their forever home.

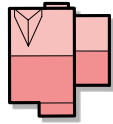
Our homes are also built to our premium specification throughout and offer a wide range of choices and upgrade options to allow you to truly make your home your own and fit around your desired lifestyle.



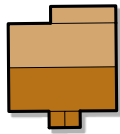
 The Elder 3 bedroom home	 The Fairway 3 bedroom home	 The Kielder 3 bedroom home	 The Mitford 4 bedroom home	 The Bywell 4 bedroom home
 The Elm 3 bedroom home	 The Laurel 3 bedroom home	 The Alnwick 4 bedroom home	 The Sycamore 4 bedroom home	 The Bamburgh 5 bedroom home

House types

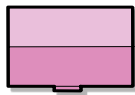
We build and design modern homes with you in mind



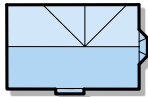
The Elder
3 bedroom home with single garage
Approximately 946 sq ft



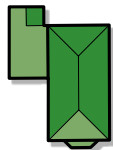
The Elm
3 bedroom home with single garage
Approximately 978 sq ft



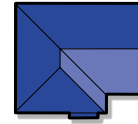
The Fairway
3 bedroom home with single garage
Approximately 1,037 sq ft



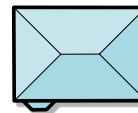
The Laurel
3 bedroom home with single garage
Approximately 1,044 sq ft



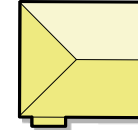
The Kielder
3 bedroom home with single garage
Approximately 1,047 sq ft



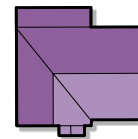
The Alnwick
4 bedroom home with single garage
Approximately 1,250 sq ft



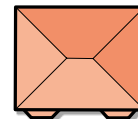
The Mitford
4 bedroom home with single garage
Approximately 1,301 sq ft



The Sycamore
4 bedroom home with single garage
Approximately 1,370 sq ft



The Bywell
4 bedroom home with single garage
Approximately 1,517 sq ft



The Bamburgh
5 bedroom home with double garage
Approximately 1,835 sq ft



Why choose Sweetbriar Park?



- Stunning West Park is on your doorstep with play area, nature reserve and walkways
- Ideal location for family fun, dog walkers and leisure time



- Ideally situated within a 10-minute drive of Darlington town centre
- Full range of shops and amenities right on your doorstep
- Surrounded by excellent transport links for commuting to or exploring areas in the North East



- Within the borders and walking distance of West Park there are a number of great education and childcare services



- Less than 1 mile away from the A1 north and south
- Just 3 miles from Darlington Railway Station
- Durham Tees Valley International Airport is within a short drive





West Park Garden Village



West Park is a unique development in Darlington and the North East. Based around the first new park in the town, it is bringing together a beautiful new community.

We are proud to be building our Sweetbriar Park development on part of an award winning redevelopment project including West Park Nature Reserve, the first new park to be created in Darlington for 100 years. The reserve is known for featuring over 30 acres of beautiful surroundings including tree plantations, wildflower meadows and wetlands, beautiful commissioned stone artwork and poetry play park and bike track to keep the little ones entertained.

West Park is bringing together a new community where housing and the natural world live side by side. The re-developed area has already won many awards including the prestigious RICS Gold Award for Regeneration, the LCG Sustainable Community award, and the Green Flag award for the latest Nature Reserve.

The nature-led development is the perfect place to buy a new home offering modern living for a new generation of Darlington homebuyers and is within walkable distance to a number of well recognised schools, supermarkets, pubs, cafés and essential amenities to cater for all needs.



 *westpark Garden Village*

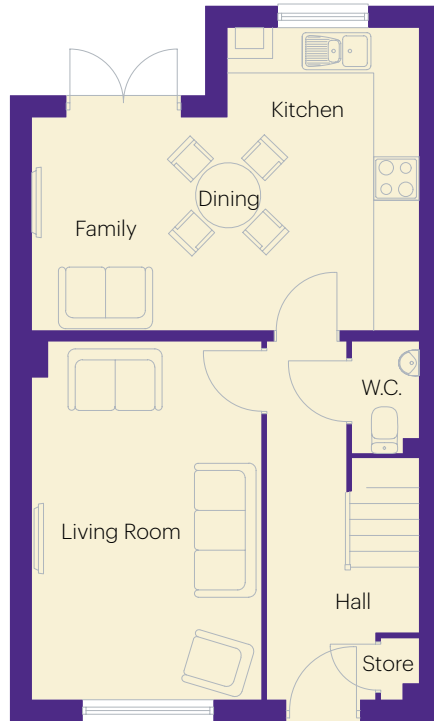
The Elder



Sweetbriar Park

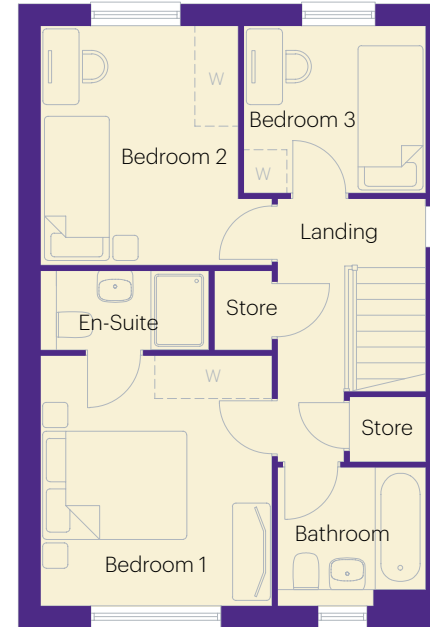
3 bedroom home with en-suite

Approximately 946 sq ft



Ground floor dimensions

Living Room	3.13m x 4.93m	10' 3" x 16' 2"
Kitchen/Dining/ Family	5.30m x 2.92m	17' 5" x 9' 7"
W.C.	0.89m x 1.6m	2' 11" x 5' 3"
Hall	2.08m x 4.93m	6' 10" x 16' 2"
Garage	3.16m x 6.09m	10' 4" x 20' 0"



First floor dimensions

Bedroom 1	3.18m x 3.44m	10' 5" x 11' 3"
En-Suite	2.31m x 1.10m	7' 7" x 3' 7"
Bedroom 2	2.71m x 3.29m	8' 11" x 10' 6"
Bedroom 3	2.50m x 2.29m	8' 2" x 7' 6"
Bathroom	2.04m x 1.90m	6' 8" x 6' 3"

Images and floor plans are for illustration purposes only and may be plot specific. House style features, treatments and landscaping may vary and all dimensions shown are approximate. The information contained herein is for guidance only and buyers must consult official paperwork with their Sales Executive for any information regarding their home.

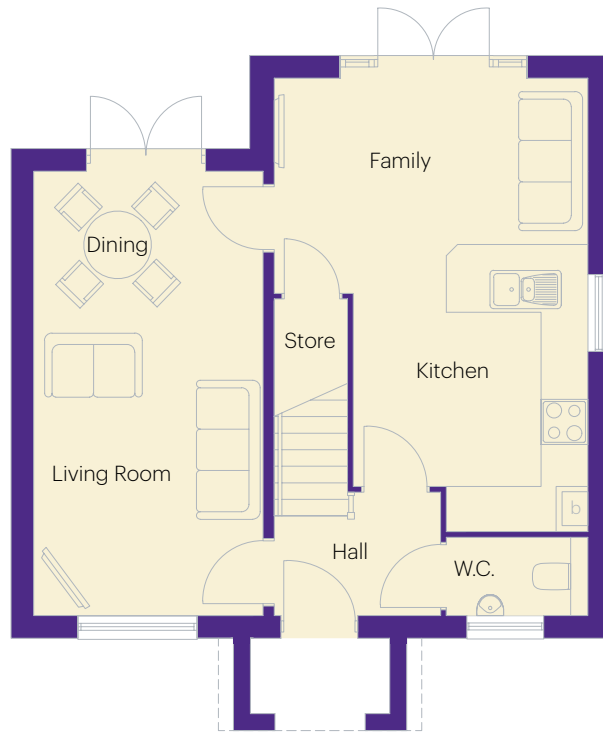
The Elm



Sweetbriar Park

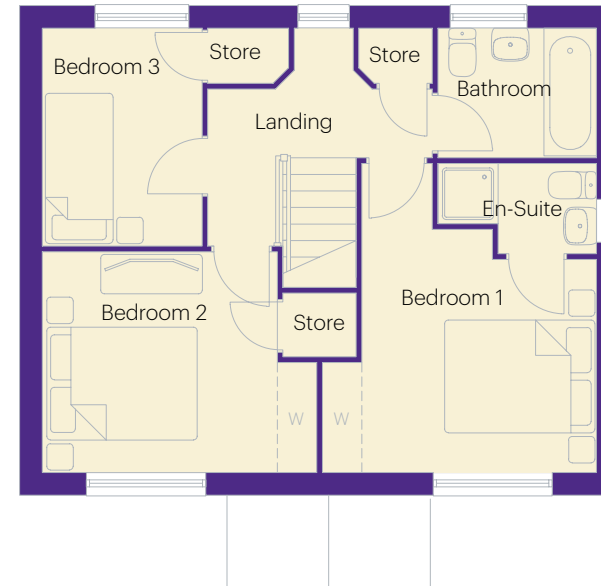
3 bedroom home with en-suite

Approximately 978 sq ft



Ground floor dimensions

Living/Dining	3.0m x 5.86m	9' 10" x 19' 2"
Kitchen/Family	4.17m x 5.96m	13' 8" x 19' 7"
W.C.	1.92m x 1.05m	6' 4" x 3' 5"
Hall	2.16m x 1.66m	7' 1" x 5' 5"



First floor dimensions

Bedroom 1	3.63m x 4.03m	11' 11" x 13' 3"
En-Suite	2.09m x 1.20m	6' 7" x 3' 11"
Bedroom 2	3.6m x 2.90m	11' 10" x 9' 6"
Bedroom 3	2.07m x 2.87m	6' 9" x 9' 5"
Bathroom	2.09m x 1.70m	6' 10" x 5' 7"

Images and floor plans are for illustration purposes only and may be plot specific. House style features, treatments and landscaping may vary and all dimensions shown are approximate. The information contained herein is for guidance only and buyers must consult official paperwork with their Sales Executive for any information regarding their home.

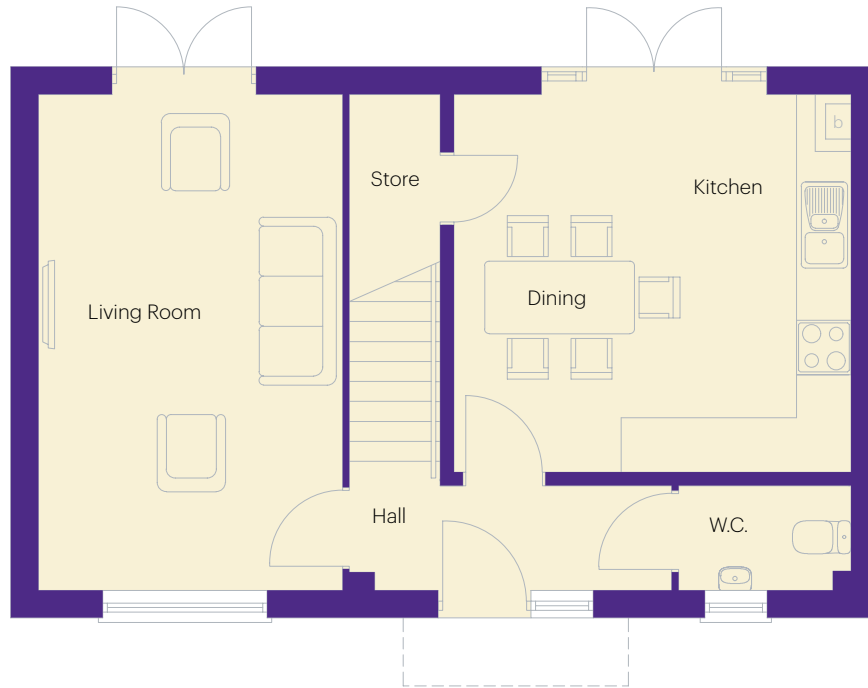
The Fairway



Sweetbriar Park

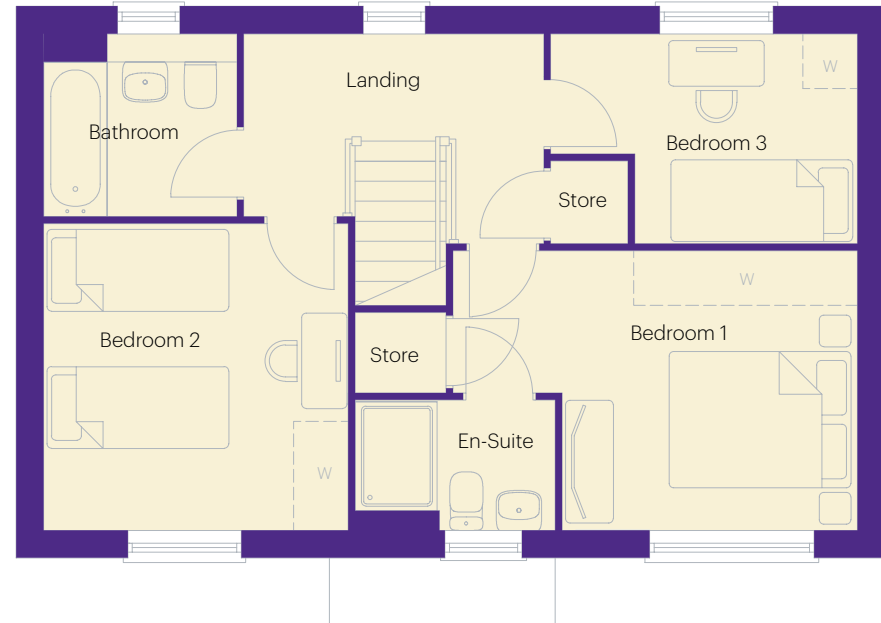
3 bedroom home with en-suite

Approximately 1,037 sq ft



Ground floor dimensions

Living Room	3.31m x 5.41m	10' 10" x 17' 9"
Kitchen/Dining	4.35m x 4.14m	14' 3" x 13' 7"
W.C.	1.88m x 1.13m	6' 2" x 3' 8"
Hall	3.54m x 1.13m	11' 7" x 3' 8"



First floor dimensions

Bedroom 1	4.41m x 3.04m	14' 6" x 10' 0"
En-Suite	2.16m x 1.40m	7' 1" x 4' 7"
Bedroom 2	3.31m x 3.42m	10' 10" x 11' 3"
Bedroom 3	3.34m x 2.29m	10' 11" x 7' 6"
Bathroom	2.10m x 1.90m	6' 11" x 6' 3"

Images and floor plans are for illustration purposes only and may be plot specific. House style features, treatments and landscaping may vary and all dimensions shown are approximate. The information contained herein is for guidance only and buyers must consult official paperwork with their Sales Executive for any information regarding their home.

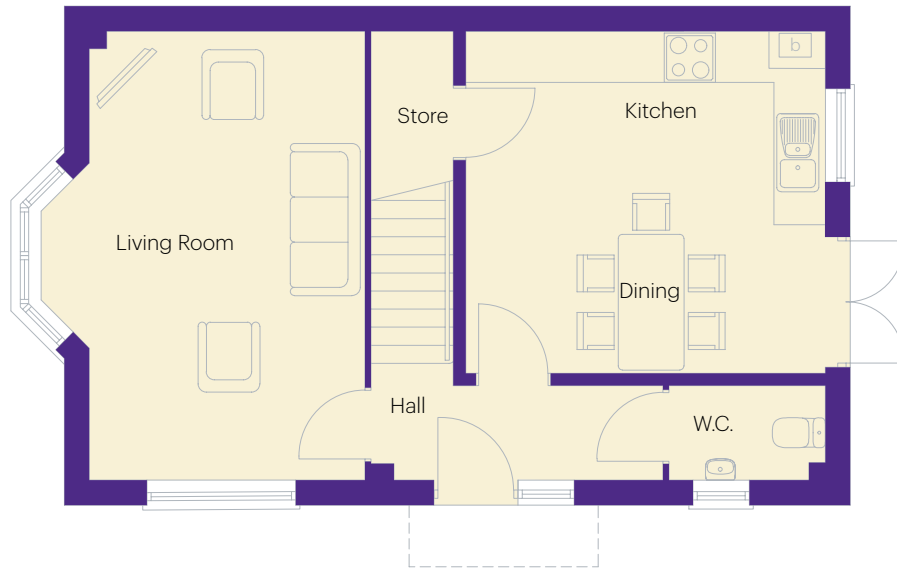
The Laurel



Sweetbriar Park

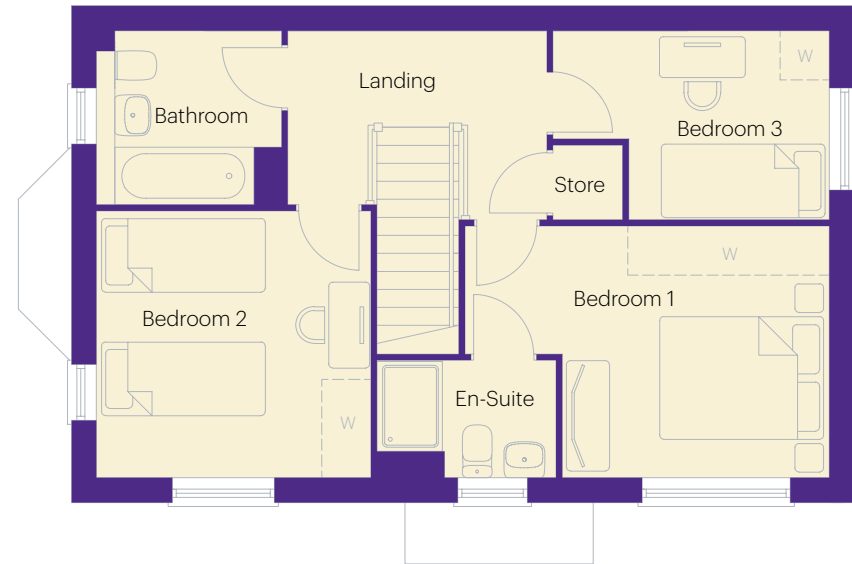
3 bedroom home with en-suite

Approximately 1,044 sq ft



Ground floor dimensions

Living Room	3.31m x 5.41m	10' 10" x 17' 9"
Kitchen/Dining	4.35m x 4.14m	14' 3" x 13' 7"
W.C.	1.88m x 1.13m	6' 2" x 3' 8"
Hall	3.54m x 1.13m	11' 7" x 3' 8"



First floor dimensions

Bedroom 1	4.41m x 3.04m	14' 6" x 10' 10"
En-Suite	2.16m x 1.40m	7' 1" x 4' 7"
Bedroom 2	3.31m x 3.25m	10' 10" x 10' 8"
Bedroom 3	3.34m x 2.29m	10' 11" x 7' 6"
Bathroom	2.22m x 2.08m	7' 3" x 6' 10"

Images and floor plans are for illustration purposes only and may be plot specific. House style features, treatments and landscaping may vary and all dimensions shown are approximate. The information contained herein is for guidance only and buyers must consult official paperwork with their Sales Executive for any information regarding their home.

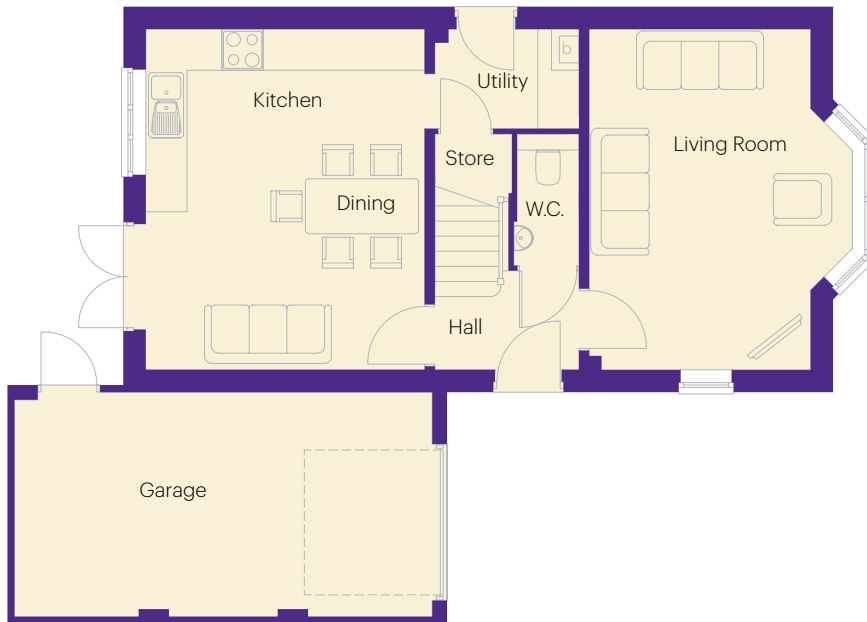
The Kielder



Sweetbriar Park

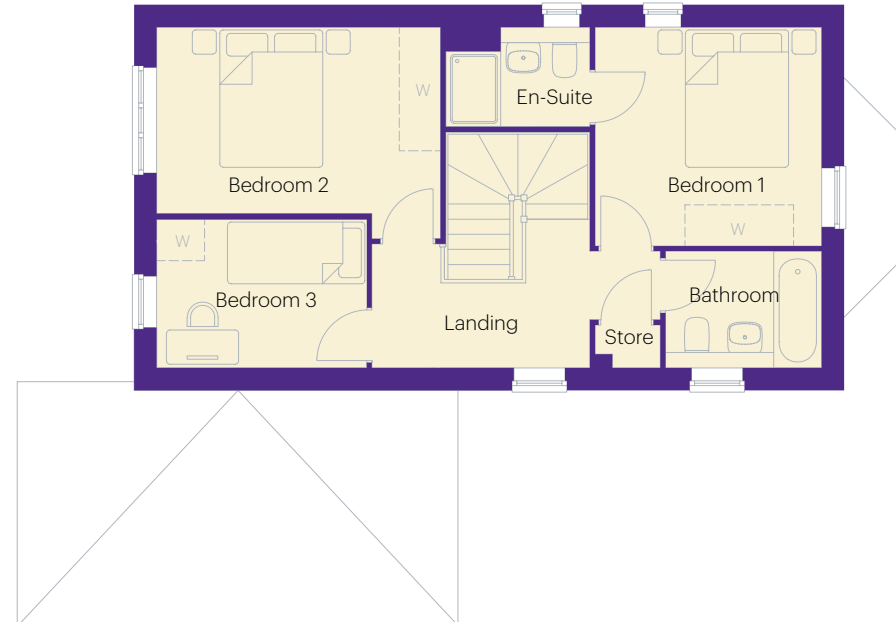
3 bedroom home with en-suite

Approximately 1,047 sq ft



Ground floor dimensions

Living Room	3.13m x 4.96m	10' 3" x 16' 3"
Kitchen/Dining	4.06m x 4.96m	13' 4" x 16' 3"
Utility	2.20m x 1.44m	7' 3" x 4' 9"
W.C.	0.95m x 1.92m	3' 1" x 6' 3"
Hall	2.20m x 1.43m	7' 3" x 4' 8"
Garage	6.09m x 3.27m	20' 0" x 10' 9"



First floor dimensions

Bedroom 1	3.19m x 3.17m	10' 6" x 10' 5"
En-Suite	2.17m x 1.44m	7' 1" x 4' 7"
Bedroom 2	4.12m x 2.71m	13' 6" x 8' 11"
Bedroom 3	3.05m x 2.16m	10' 0" x 7' 1"
Bathroom	2.20m x 1.70m	7' 3" x 5' 7"

Images and floor plans are for illustration purposes only and may be plot specific. House style features, treatments and landscaping may vary and all dimensions shown are approximate. The information contained herein is for guidance only and buyers must consult official paperwork with their Sales Executive for any information regarding their home.

The Alnwick



Sweetbriar Park

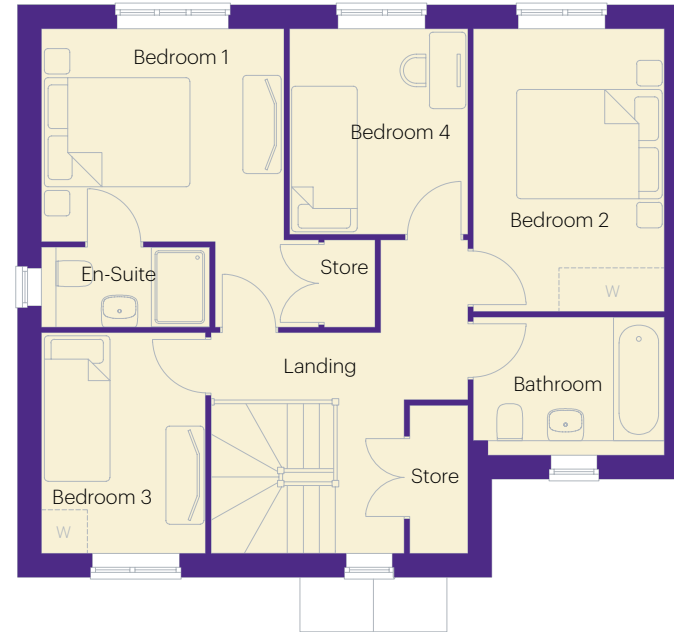
4 bedroom home with en-suite

Approximately 1,250 sq ft



Ground floor dimensions

Living Room	3.70m x 3.87m	12' 2" x 12' 8"
Kitchen	3.25m x 3.49m	10' 8" x 11' 5"
Dining	4.78m x 2.29m	15' 8" x 7' 6"
Study	2.24m x 3.19m	7' 4" x 10' 5"
W.C.	1.45m x 1.5m	4' 9" x 4' 11"
Hall	3.53m x 3.19m	11' 7" x 10' 5"



First floor dimensions

Bedroom 1	3.32m x 4.10m	10' 11" x 13' 5"
En-Suite	2.31m x 1.10m	7' 7" x 3' 7"
Bedroom 2	2.61m x 3.87m	8' 7" x 12' 8"
Bedroom 3	2.24m x 3.02m	7' 4" x 9' 11"
Bedroom 4	2.45m x 2.81m	8' 0" x 9' 3"
Bathroom	2.61m x 1.90m	8' 7" x 6' 3"

Images and floor plans are for illustration purposes only and may be plot specific. House style features, treatments and landscaping may vary and all dimensions shown are approximate. The information contained herein is for guidance only and buyers must consult official paperwork with their Sales Executive for any information regarding their home.

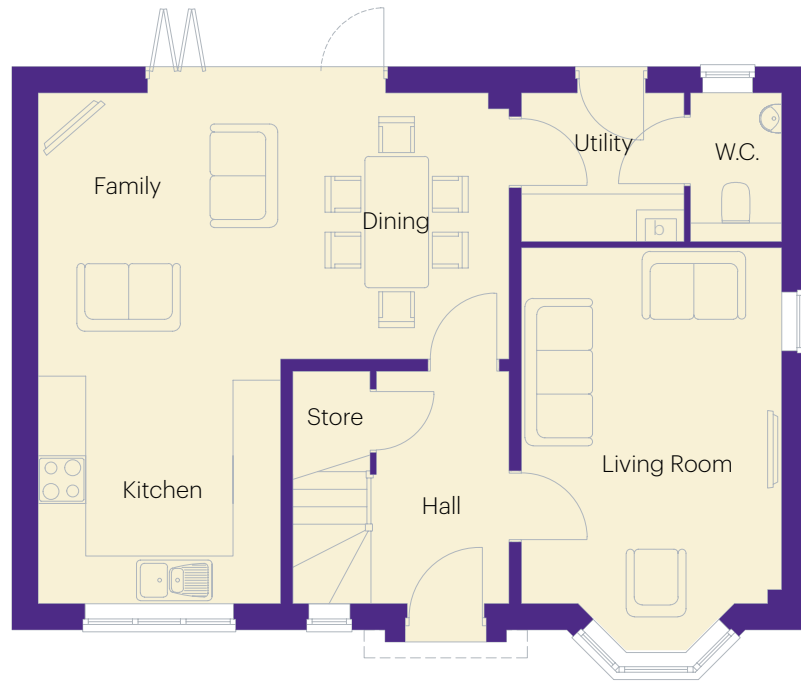
The Mitford



Sweetbriar Park

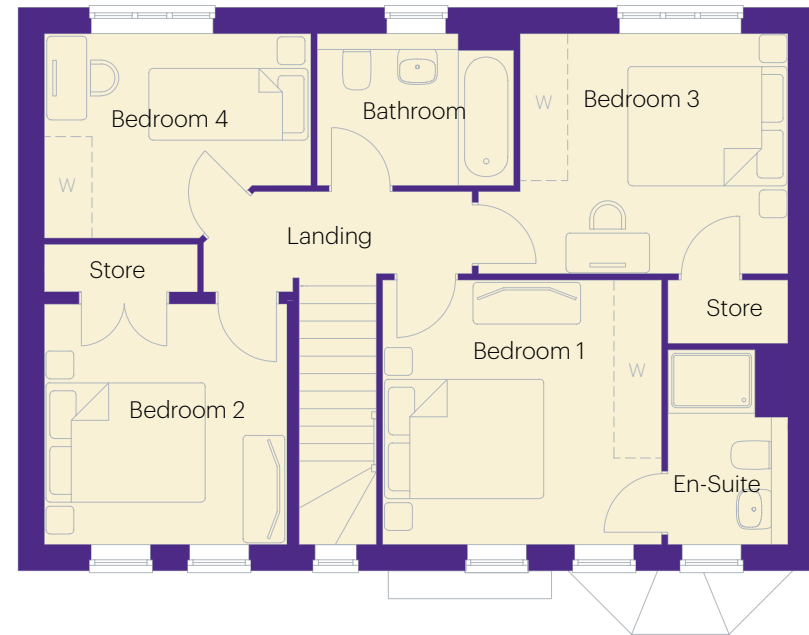
4 bedroom home with en-suite

Approximately 1,301 sq ft



Ground floor dimensions

Living Room	3.28m x 4.46m	10' 9" x 14' 8"
Kitchen	3.05m x 3.18m	10' 0" x 10' 5"
Family/Dining	5.92m x 3.25m	19' 5" x 10' 8"
Utility	2.05m x 1.87m	6' 9" x 6' 2"
W.C.	1.14m x 1.87m	3' 9" x 6' 2"
Hall	1.58m x 3.03m	5' 2" x 9' 11"



First floor dimensions

Bedroom 1	3.48m x 3.34m	11' 5" x 10' 11"
En-Suite	1.51m x 2.45m	4' 11" x 8' 0"
Bedroom 2	3.33m x 3.02m	10' 11" x 9' 11"
Bedroom 3	3.09m x 3.06m	10' 2" x 10' 0"
Bedroom 4	3.34m x 2.57m	10' 11" x 8' 5"
Bathroom	2.48m x 1.91m	8' 2" x 6' 3"

Images and floor plans are for illustration purposes only and may be plot specific. House style features, treatments and landscaping may vary and all dimensions shown are approximate. The information contained herein is for guidance only and buyers must consult official paperwork with their Sales Executive for any information regarding their home.

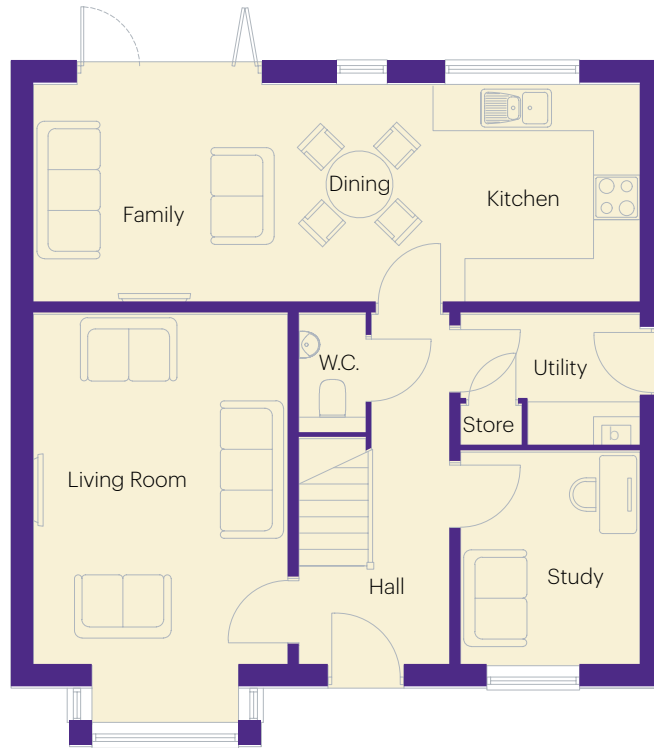
The Sycamore



Sweetbriar Park

4 bedroom home with two en-suites

Approximately 1,370 sq ft



Ground floor dimensions

Living Room	3.40m x 4.70m	11' 2" x 15' 5"
Kitchen/Dining/ Family	8.11m x 2.92m	26' 7" x 9' 7"
W.C.	0.89m x 1.61m	2' 11" x 5' 3"
Hall	2.03m x 4.70m	6' 8" x 15' 5"
Study	2.39m x 2.84m	7' 10" x 9' 4"
Utility	2.39m x 1.78m	7' 10" x 5' 10"



First floor dimensions

Bedroom 1	3.46m x 4.24m	11' 4" x 13' 11"
En-Suite 1	2.38m x 1.10m	7' 10" x 3' 7"
Bedroom 2	3.42m x 3.21m	11' 3" x 10' 6"
En-Suite 2	2.36m x 1.10m	7' 9" x 3' 7"
Bedroom 3	2.36m x 3.29m	7' 9" x 10' 10"
Bedroom 4	3.40m x 3.29m	11' 2" x 10' 10"
Bathroom	2.17m x 2.26m	7' 1" x 7' 5"

Images and floor plans are for illustration purposes only and may be plot specific. House style features, treatments and landscaping may vary and all dimensions shown are approximate. The information contained herein is for guidance only and buyers must consult official paperwork with their Sales Executive for any information regarding their home.

The Bywell



Sweetbriar Park

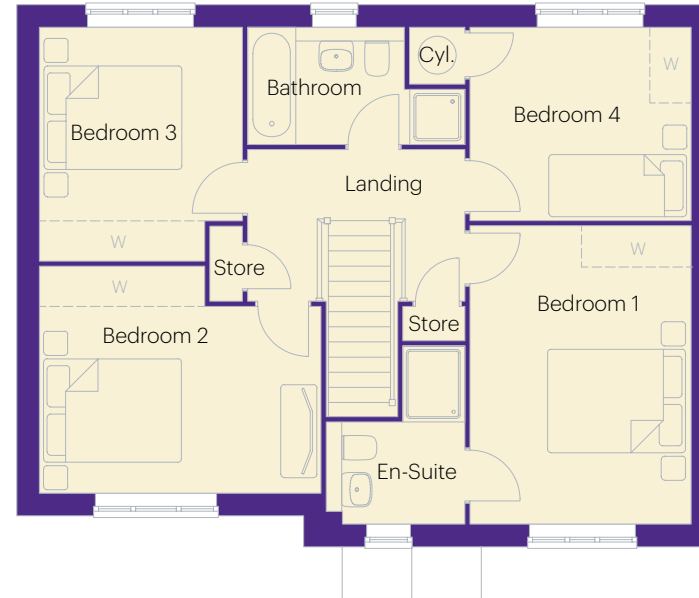
4 bedroom home with en-suite

Approximately 1,517 sq ft



Ground floor dimensions

Living Room	4.01m x 3.96m	13' 2" x 13' 0"
Kitchen/Dining	5.30m x 3.93m	17' 4" x 12' 11"
Family	4.01m x 2.71m	13' 2" x 8' 11"
Utility	1.69m x 1.66m	5' 6" x 5' 6"
Study	2.98m x 2.96m	9' 9" x 9' 8"
W.C.	1.20m x 1.66m	3' 11" x 5' 5"
Hall	2.17m x 4.71m	7' 1" x 15' 5"



First floor dimensions

Bedroom 1	3.18m x 4.33m	10' 5" x 14' 2"
En-Suite	2.03m x 1.49m	6' 8" x 4' 11"
Bedroom 2	4.08m x 3.29m	13' 5" x 10' 9"
Bedroom 3	2.91m x 3.39m	9' 6" x 11' 1"
Bedroom 4	3.18m x 2.79m	10' 5" x 9' 2"
Bathroom	2.28m x 1.70m	7' 6" x 5' 7"

Images and floor plans are for illustration purposes only and may be plot specific. House style features, treatments and landscaping may vary and all dimensions shown are approximate. The information contained herein is for guidance only and buyers must consult official paperwork with their Sales Executive for any information regarding their home.

3 bed					4 bed				5 bed
Elder	Elm	Fairway	Laurel	Kielder	Alnwick	Mitford	Sycamore	Bywell	Bamburgh

Internal features

Internal doors of 4 panel design with white gloss paint and polished chrome finish door handles
Skirtings with white gloss paint
Ceilings, walls and woodwork finished in white
Gas central heating system with radiators throughout
Mains wired electric smoke detectors
Loft and exterior wall insulation

External features

Stainless steel exterior wall light to front entrance
Sensor light to rear of the property										
1.8m high rear enclosure fencing and wall, where applicable with 1.8 metre party wall fencing
Rotivated top soil to rear garden
Turf to rear garden										
Turf to front garden
Concrete paving around home
Electric garage door										
Outside tap
UPVC double glazed windows with locking system
UPVC French doors with locking system to ground floor
Bi-folding doors with locking system to ground floor					

Security features

Front and rear doors with multi-point locking system
Front door restrictor and viewer
Intruder alarm with PIR detectors, external siren/strobe box										

Standard item
 Available as an optional extra
 Not available as an optional extra

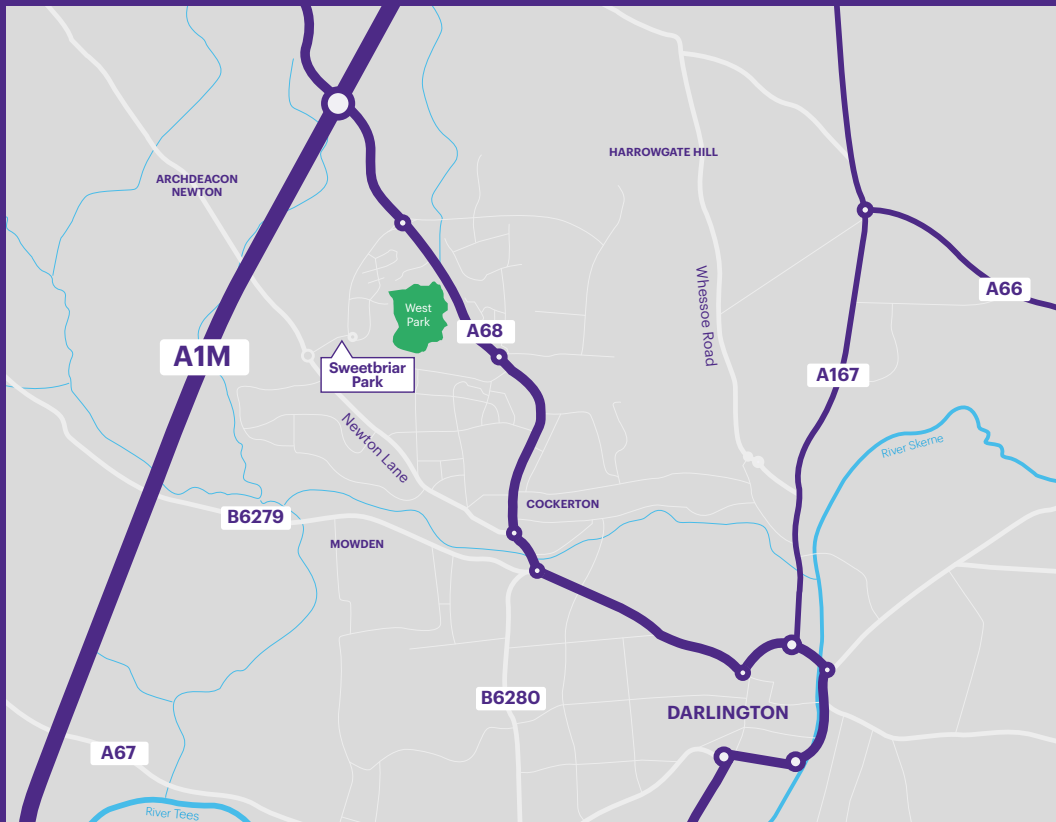
Individual treatments, features and specifications may vary and are subject to change.







 *westpark* Garden Village



Sweetbriar Park

West Park Garden Village,
Darlington,
DL2 2TS

Tel: **07790 572 644**

Email: sweetbriarpark@gentoohomes.com

Follow us:



**CONSUMER
CODE FOR
HOME BUILDERS**
www.consumercode.co.uk

